

UNIT: mm

TYPE	A	B	C	D	E
12M	12 ^{+0.085} _{-0.015}	4 ^{+0.08} _{-0.02}	13.8 ^{+0.12}	25.5	6.75

DESIGNED BY					
CHECKED BY					
APPROVED BY					
ALL PROPRIETARY RIGHTS IN THE SUBJECT MATTER HEREOF ARE RESERVED, AND NO PERMISSION IS GRANTED TO REPRODUCE THIS PRINT IN WHOLE OR IN PART, OR TO DISCLOSE ANY OF THE INFORMATION TO OTHERS.		WEIGHT	SCALE	3" SLEWING DRIVE	
		12.3Kg	NTS		
SYMBOLS ISO	SIZE	A3	SHEET	1/1	ZE3B-62M-RC
		THE TOLERANCE NOT MENTIONED IS REFERRED TO ISO 2768-L (CASTING TOLERANCE ISO 8062-CT10)		REV	
					A

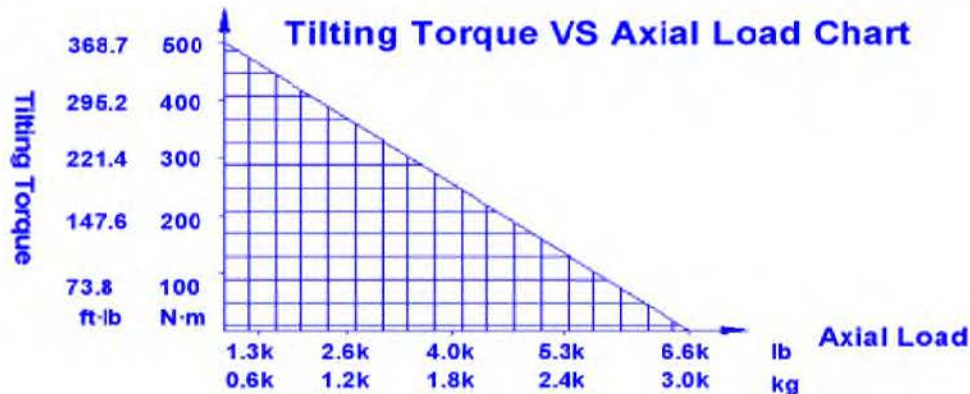
SLEWING DRIVES PERFORMANCE DATA

Model Code : ZE3B-62M-RC

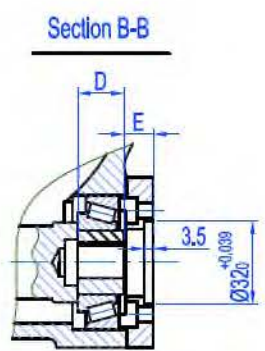
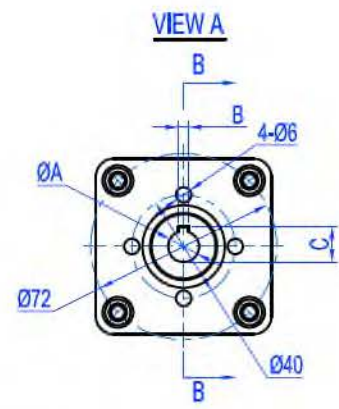
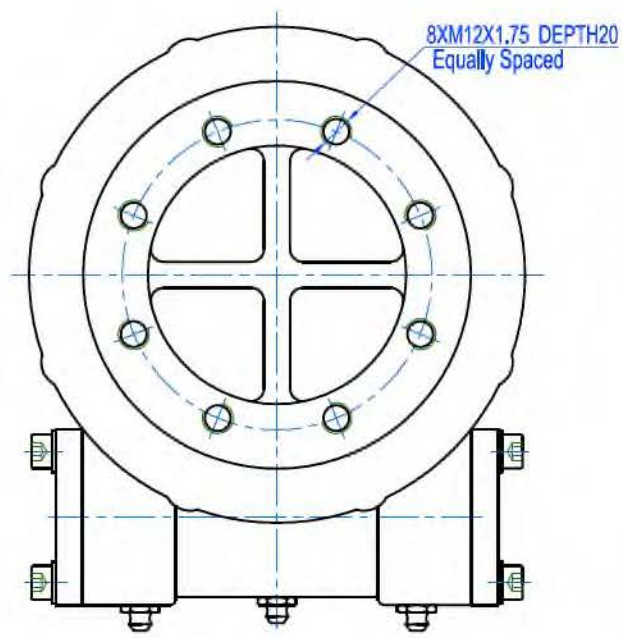
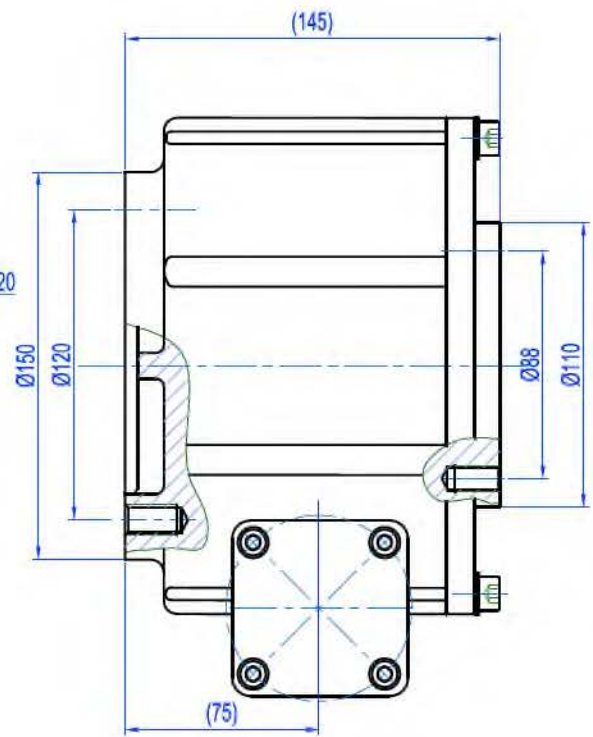
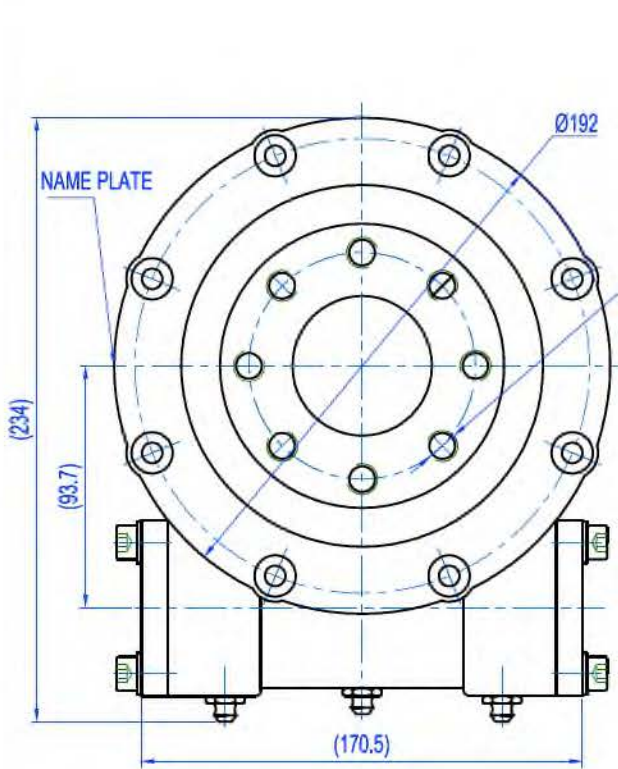
Slewing Drive Ratio	62:1
Rotating Output Rated Speed	-
Efficiency	30%
International Protection (IP)	55
Motor Temperature	-
Worm Drive Temperature	- 20°C to +120°C
Traceability	CEDS
Torsion Stiffness	137 Nm/mRad
Bending Stiffness	190Nm/mRad



Slewing Drive Loading Data	HC Type				HQ Type			
		N·m	ft·lb		N·m	ft·lb		
Normal Output Torque	101		74		300		221	
Max. Output Torque(3 sec.)	201		148		449		331	
Backwards Holding Torque	3,900		2,877		3,000		2,213	
Overturning Moment	1,000		738		500		369	
Static Radial Rating	16.60	kN	3,732	lb	16.60	kN	3,732	lb
Static Axial Rating	29.40	kN	6,609	lb	29.40	kN	6,609	lb
Dynamic Radial Rating	8.40	kN	1,888	lb	8.40	kN	1,888	lb
Dynamic Axial Rating	9.60	kN	2,158	lb	9.60	kN	2,158	lb



DESIGNED BY			
CHECKED BY			
APPROVED BY			
<small>ALL PROPRIETARY RIGHTS IN THE SUBJECT MATTER HEREOF ARE RESERVED, AND NO PERMISSION IS GRANTED TO REPRODUCE THIS PRINT IN WHOLE OR IN PART, OR TO DISCLOSE ANY OF THE INFORMATION TO OTHERS.</small>		WEIGHT	SCALE
			NTS
SYMBOL ISO		SHEET	1/1
		3" SLEWING DRIVE	
		ZE3B-62M-RC	
		REV A	



UNIT: mm

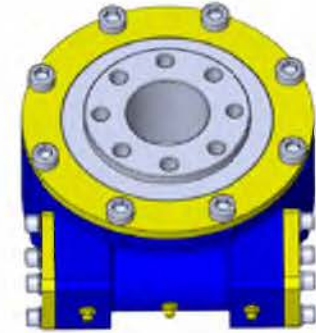
TYPE	A	B	C	D	E
12M	12 ^{+0.055} _{-0.015}	4 ^{+0.08} _{-0.02}	13.0 ^{+0.12} ₀	18	11.25

DESIGNED BY					
CHECKED BY					
APPROVED BY					
ALL PROPRIETARY RIGHTS IN THE SUBJECT MATTER HEREOF ARE RESERVED, AND NO PERMISSION IS GRANTED TO REPRODUCE THIS PRINT IN WHOLE OR IN PART, OR TO DISCLOSE ANY OF THE INFORMATION TO OTHERS.	WEIGHT	SCALE	5" SLEWING DRIVE		
	22.8Kg	NTS			
SYMBOLE ISO	SIZE	A3	SHEET	1/1	ZE5C-62M-RC
		THE TOLERANCE NOT MENTIONED IS REFERRED TO ISO 2768-ML (CASTING TOLERANCE ISO 8062-LT10)		REV	
					A

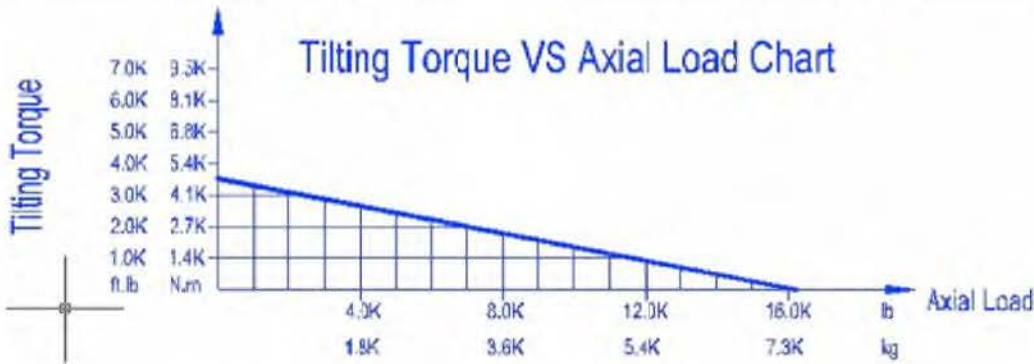
SLEWING DRIVES PERFORMANCE DATA

Model Code : ZE5C-62M-RC

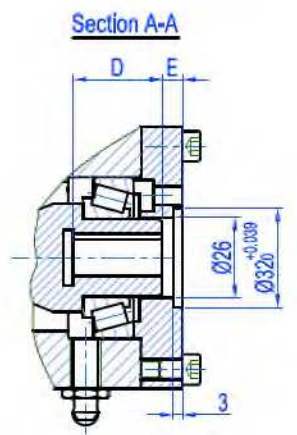
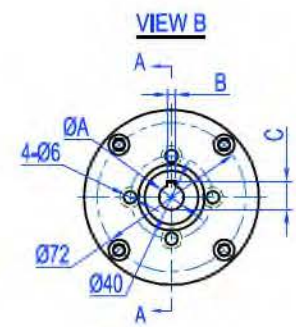
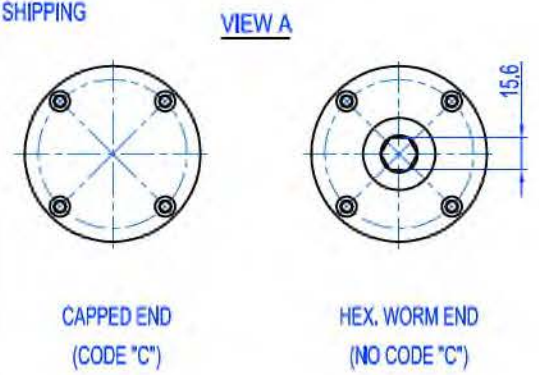
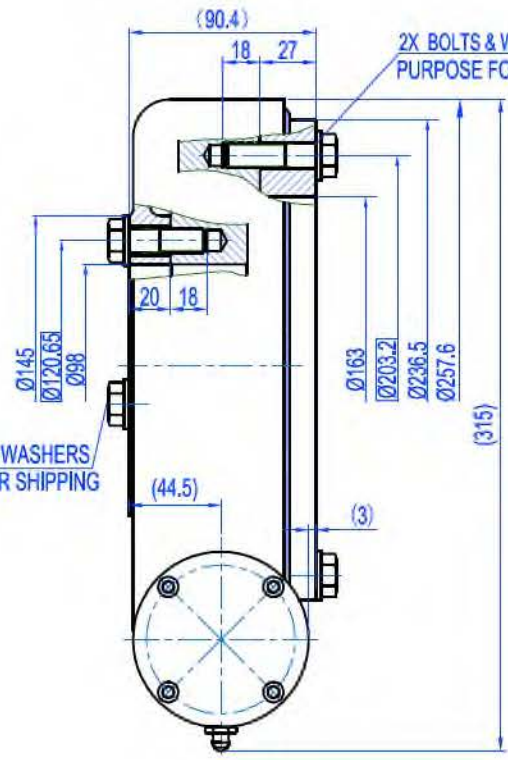
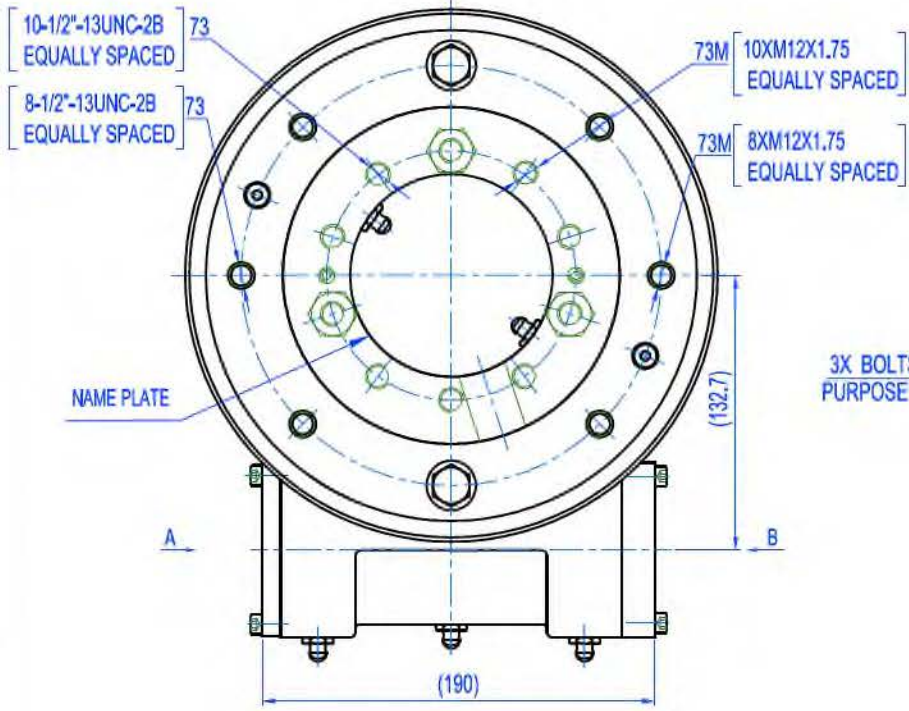
Slewing Drive Ratio	62:1
Rotating Output Rated Speed	-
Efficiency	30%
International Protection (IP)	55
Motor Temperature	-
Worm Drive Temperature	- 20°C to +120°C
Traceability	CEDS
Torsion Stiffness	252 Nm/mRad
Bending Stiffness	543Nm/mRad



Slewing Drive Loading Data	HC Type				HQ Type			
		N·m	ft·lb		N·m	ft·lb		
Normal Output Torque	265		196		425		313	
Max. Output Torque(3 sec.)	398		294		637		470	
Backwards Holding Torque	4,700		3,467		4,700		3,467	
Overturning Moment	5,011		3,696		5,011		3,696	
Static Radial Rating	27.10		6,092		27.10		6,092	
Static Axial Rating	67.90		15,264		67.90		15,264	
Dynamic Radial Rating	14.00		3,147		14.00		3,147	
Dynamic Axial Rating	16.45		3,698		16.45		3,698	



DESIGNED BY						
CHECKED BY						
APPROVED BY						
<small>ALL PROPRIETARY RIGHTS IN THE SUBJECT MATTER HEREOF ARE RESERVED, AND NO PERMISSION IS GRANTED TO REPRODUCE THIS PRINT IN WHOLE OR IN PART, OR TO DISCLOSE ANY OF THE INFORMATION TO OTHERS.</small>		WEIGHT	SCALE	5" SLEWING DRIVE		
			NTS			
SYMBOL	SIZE	A4	SHEET	1/1	ZE5C-62M-RC	REV
ISO						A



TYPE: 12M

UNIT: mm

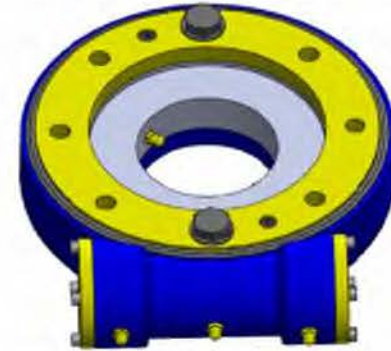
TYPE	A	B	C	D	E
12M	12 ^{+0.026} _{-0.015}	4 ^{+0.06} _{-0.02}	13.8 ^{+0.2} ₀	25.5	7.2

DESIGNED BY					
CHECKED BY					
APPROVED BY					
ALL PROPRIETARY RIGHTS IN THE SUBJECT MATTER HEREOF ARE RESERVED, AND NO PERMISSION IS GRANTED TO REPRODUCE THIS PRINT IN WHOLE OR IN PART, OR TO DISCLOSE ANY OF THE INFORMATION TO OTHERS.			WEIGHT	SCALE	7" SLEWING DRIVE
			21.3Kg	NTS	
SYMBOL ISO	SIZE	A3	SHEET	1/1	ZE7C-73(M)-R(C)
				THE TOLERANCE NOT MENTIONED IS REFERRED TO ISO 2768-M, CASTING TOLERANCE ISO 8062-CT10	

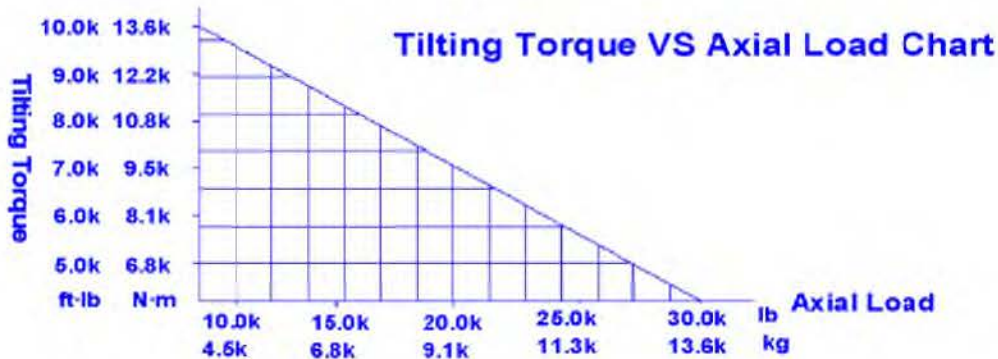
SLEWING DRIVES PERFORMANCE DATA

Model Code : ZE7C-73(M)-R(C)

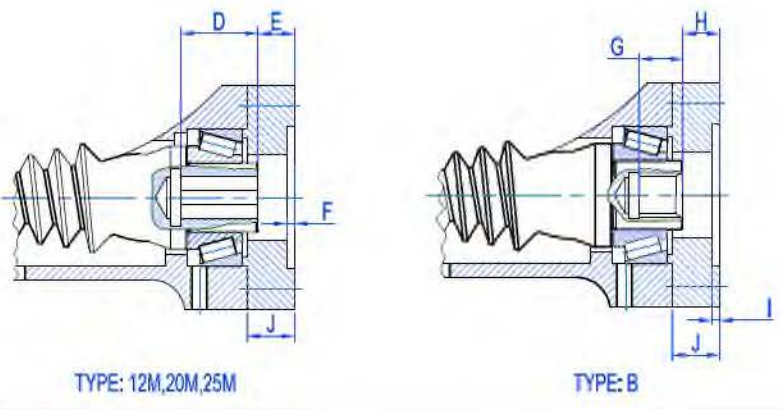
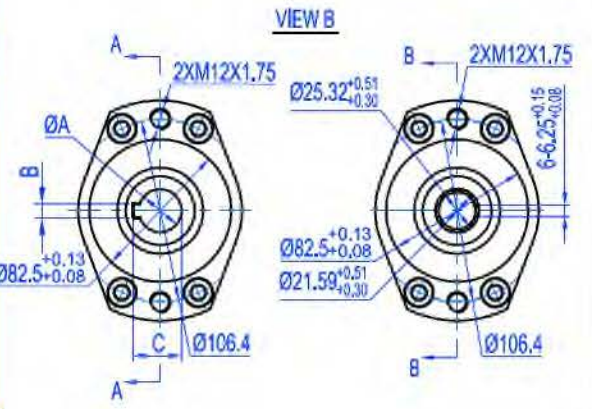
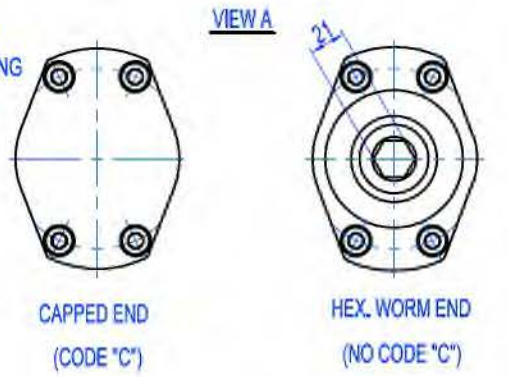
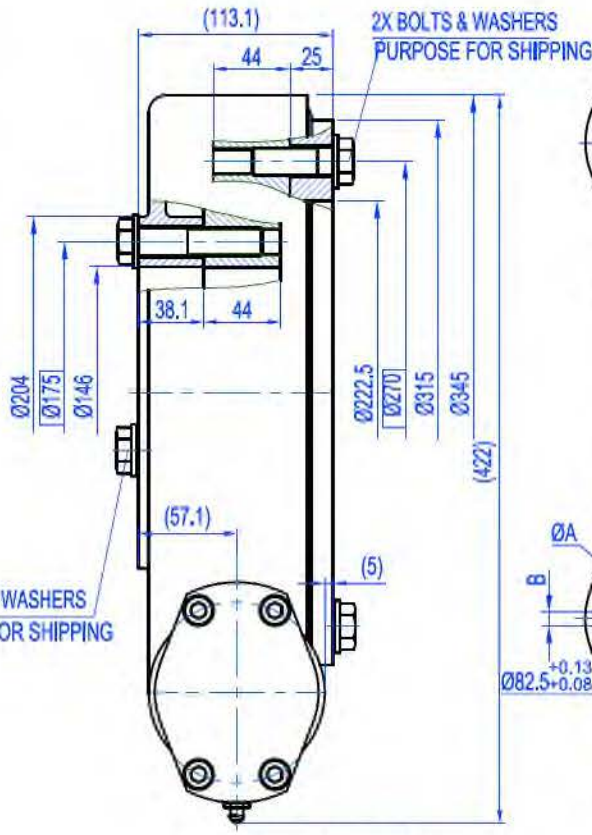
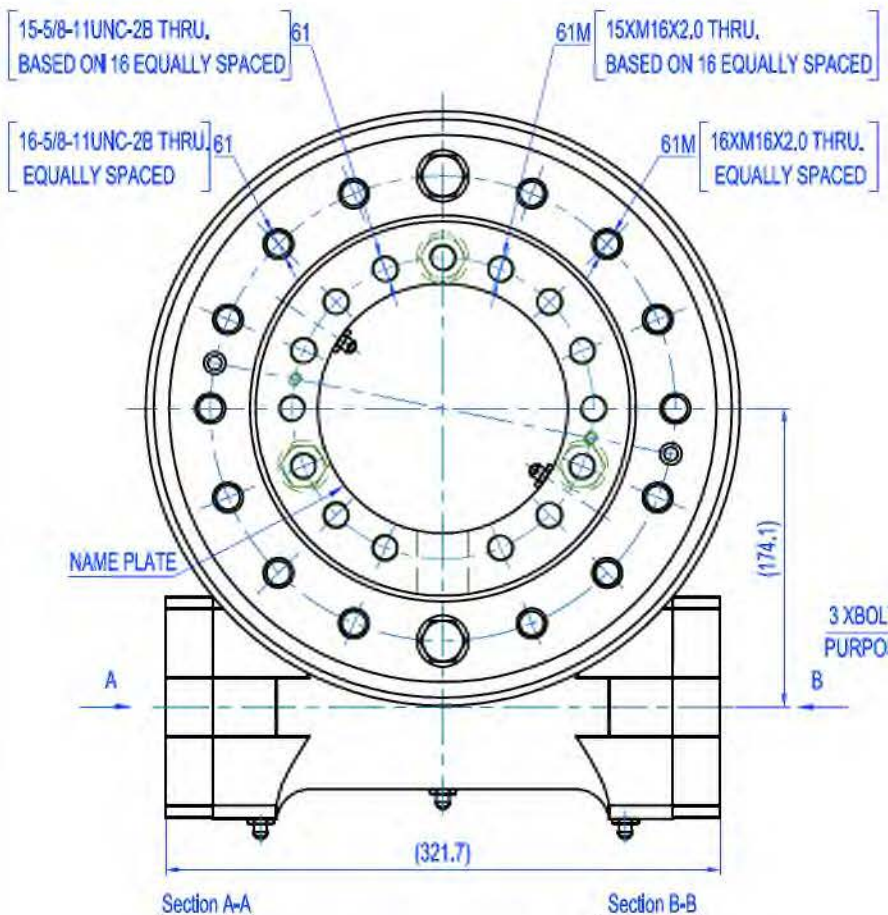
Slewing Drive Ratio	73:1
Rotating Output Rated Speed	-
Efficiency	30%
International Protection (IP)	55
Motor Temperature	-
Worm Drive Temperature	- 20°C to +120°C
Traceability	CEDS
Torsion Stiffness	762 Nm/mRad
Bending Stiffness	1083Nm/mRad



Slewing Drive Loading Data	HC Type				HB Type				HQ Type				HA Type			
Normal Output Torque	503	N·m	371	ft·lb	603	N·m	445	ft·lb	804	N·m	593	ft·lb	1,005	N·m	741	ft·lb
Max. Output Torque(3 sec.)	1,005	N·m	741	ft·lb	1,206	N·m	890	ft·lb	1,608	N·m	1,186	ft·lb	2,010	N·m	1,483	ft·lb
Backwards Holding Torque	10,338	N·m	7,625	ft·lb	10,338	N·m	7,625	ft·lb	10,338	N·m	7,625	ft·lb	10,338	N·m	7,625	ft·lb
Overturning Moment	13,556	N·m	9,999	ft·lb	13,556	N·m	9,999	ft·lb	13,556	N·m	9,999	ft·lb	13,556	N·m	9,999	ft·lb
Static Radial Rating	53.28	KN	11,977	lb	53.28	KN	11,977	lb	53.28	KN	11,977	lb	53.28	KN	11,977	lb
Static Axial Rating	133.20	kN	29,943	lb	133.20	kN	29,943	lb	133.20	kN	29,943	lb	133.20	kN	29,943	lb
Dynamic Radial Rating	27.91	KN	6,274	lb	27.91	KN	6,274	lb	27.91	KN	6,274	lb	27.91	KN	6,274	lb
Dynamic Axial Rating	31.90	kN	7,171	lb	31.90	kN	7,171	lb	31.90	kN	7,171	lb	31.90	kN	7,171	lb



DESIGNED BY							
CHECKED BY							
APPROVED BY							
ALL PROPRIETARY RIGHTS IN THE SUBJECT MATTER HEREOF ARE RESERVED, AND NO PERMISSION IS GRANTED TO REPRODUCE THIS PRINT IN WHOLE OR IN PART, OR TO DISCLOSE ANY OF THE INFORMATION TO OTHERS.				WEIGHT	SCALE	7" SLEWING DRIVE	
					NTS		
SYMOLE ISO	SIZE	A4	SHEET	1/1	ZE7C-73(M)-R(C)		REV
				A			



UNIT: mm

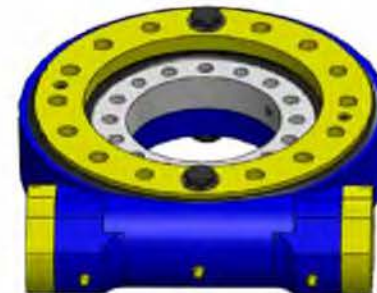
TYPE	A	B	C	D	E	F	G	H	I	J
12M	12 ^{+0.012}	4.5 ^{+0.012}	13.8 ^{+0.012}	23	0	4.5	/	/	/	27.5
20M	20 ^{+0.012}	6 ^{+0.012}	22.8 ^{+0.012}	30	12	4.5	/	/	/	27.5
25M	25 ^{+0.012}	8 ^{+0.012}	28.3 ^{+0.012}	35	21.2	4.5	/	/	/	27.5
B	/	/	/	/	/	/	25.4	21.2	4.5	27.5

DESIGNED BY					
CHECKED BY					
APPROVED BY					
ALL PROPRIETARY RIGHTS IN THE SUBJECT MATTER HEREOF ARE RESERVED, AND NO PERMISSION IS GRANTED TO REPRODUCE THIS PRINT IN WHOLE OR IN PART, OR TO DISCLOSE ANY OF THE INFORMATION TO OTHERS.			WEIGHT	SCALE	9" SLEWING DRIVE
			48Kg	NTS	
SYMBOL ISO	SIZE	A3	SHEET	1/1	ZE9C-61(M)-R(C)
		THE TOLERANCE NOT MENTIONED IS REFERRED TO ISO 2768-LS CASTING TOLERANCE ISO 3062-CT10			

SLEWING DRIVES PERFORMANCE DATA

Model Code : ZE9C-61(M)-R(C)

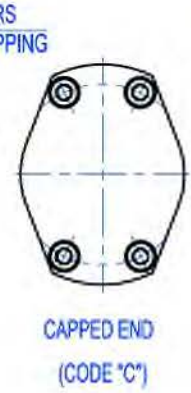
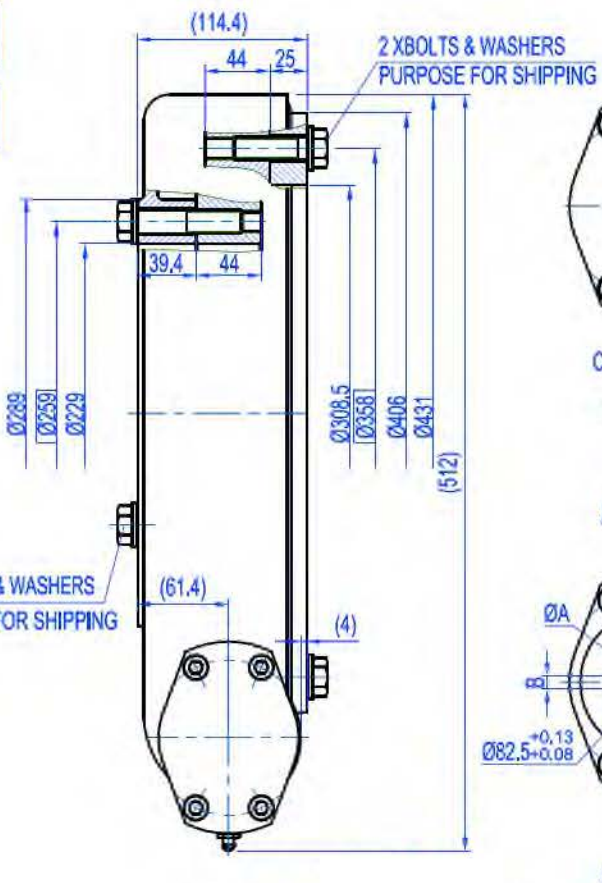
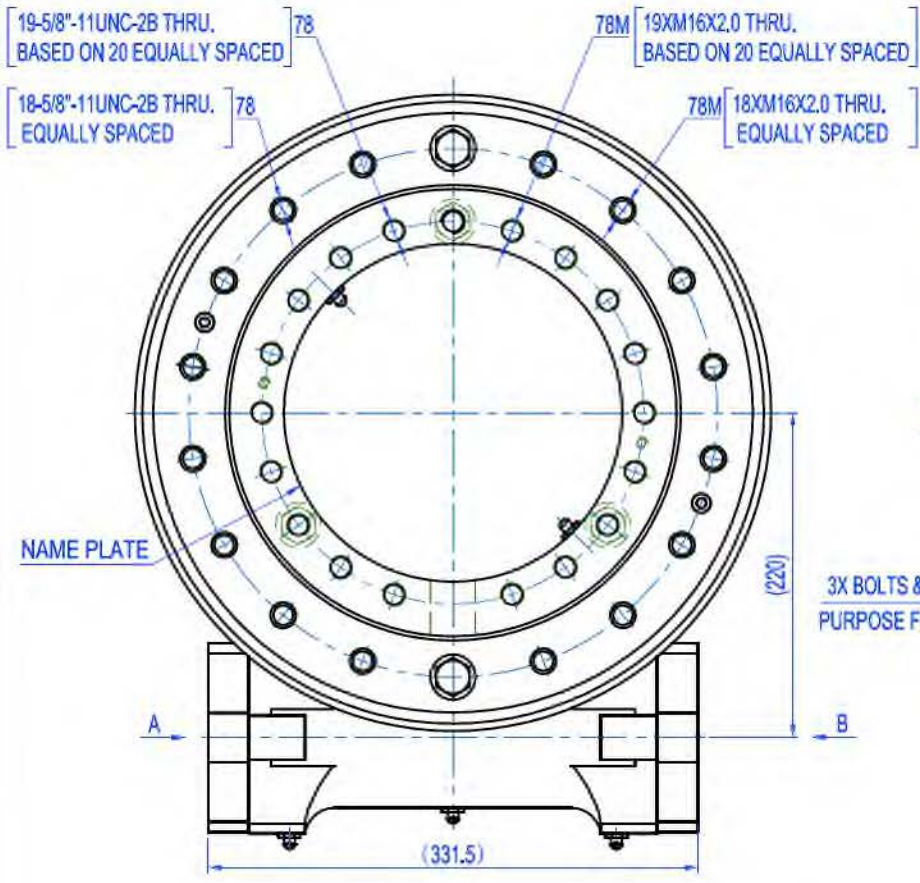
Slewing Drive Ratio	61:1
Rotating Output Rated Speed	-
Efficiency	43%
International Protection (IP)	55
Motor Temperature	-
Worm Drive Temperature	- 20°C to +120°C
Traceability	CEDS
Torsion Stiffness	1,444Nm/mRad
Bending Stiffness	1,701Nm/mRad



Slewing Drive Loading Data	HC Type				HB Type				HQ Type				HA Type			
Normal Output Torque	1,120	N·m	825	ft·lb	1,344	N·m	991	ft·lb	1,792	N·m	1,322	ft·lb	2,240	N·m	1,652	ft·lb
Max. Output Torque(3 sec.)	2,240	N·m	1,652	ft·lb	2,688	N·m	1,983	ft·lb	3,584	N·m	2,644	ft·lb	4,480	N·m	3,304	ft·lb
Backwards Holding Torque	38,710	N·m	28,552	ft·lb	38,710	N·m	28,552	ft·lb	38,710	N·m	28,552	ft·lb	38,710	N·m	28,552	ft·lb
Overturning Moment	33,900	N·m	25,005	ft·lb	33,900	N·m	25,005	ft·lb	33,900	N·m	25,005	ft·lb	33,900	N·m	25,005	ft·lb
Static Radial Rating	134.98	kN	30,344	lb	134.98	kN	30,344	lb	134.98	kN	30,344	lb	134.98	kN	30,344	lb
Static Axial Rating	337.44	kN	75,857	lb	337.44	kN	75,857	lb	337.44	kN	75,857	lb	337.44	kN	75,857	lb
Dynamic Radial Rating	70.86	kN	15,929	lb	70.86	kN	15,929	lb	70.86	kN	15,929	lb	70.86	kN	15,929	lb
Dynamic Axial Rating	80.99	kN	18,207	lb	80.99	kN	18,207	lb	80.99	kN	18,207	lb	80.99	kN	18,207	lb



DESIGNED BY					
CHECKED BY					
APPROVED BY					
ALL PROPRIETARY RIGHTS IN THE SUBJECT MATTER HEREOF ARE RESERVED, AND NO PERMISSION IS GRANTED TO REPRODUCE THIS PRINT IN WHOLE OR IN PART, OR TO DISCLOSE ANY OF THE INFORMATION TO OTHERS.			WEIGHT	SCALE	9" SLEWING DRIVE
				NTS	
SYMBOLS ISO	SIZE	A4	SHEET	1/1	ZE9C-61(M)-R(C)

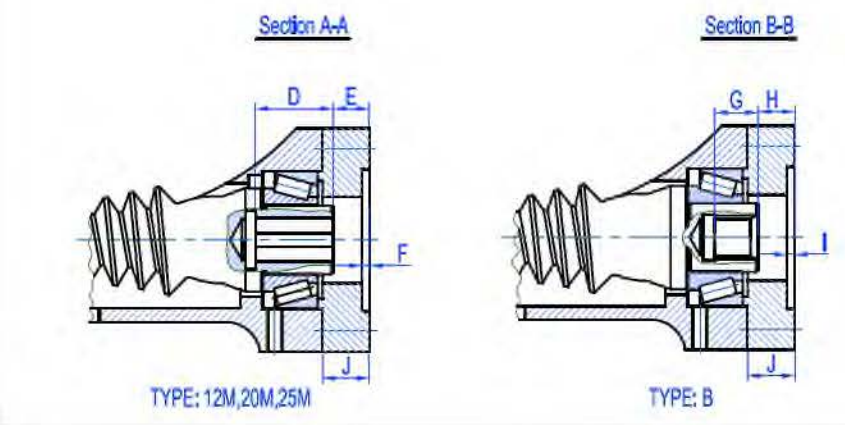
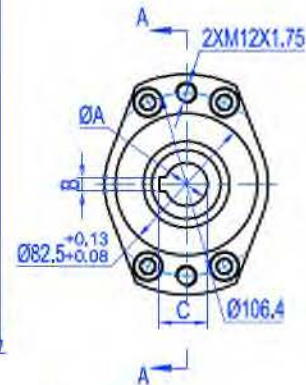


VIEW A



HEX. WORM END
(NO CODE "C")

VIEW B



UNIT: mm

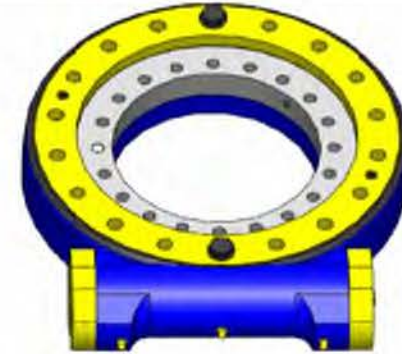
TYPE	A	B	C	D	E	F	G	H	I	J
12M	12 ^{+0.01}	4.5 ^{+0.01}	13.8 ^{+0.01}	23	-3	4.5				27.5
20M	20 ^{+0.01}	6 ^{+0.01}	22.8 ^{+0.01}	30	12	4.5				27.5
25M	25 ^{+0.01}	8 ^{+0.01}	28.3 ^{+0.01}	35	21.2	4.5				27.5
B							25.4	21.2	4.5	27.5

DESIGNED BY					
CHECKED BY					
APPROVED BY					
ALL PROPRIETARY RIGHTS IN THE SUBJECT MATTER HEREOF ARE RESERVED, AND NO PERMISSION IS GRANTED TO REPRODUCE THIS PRINT IN WHOLE OR IN PART, OR TO DISCLOSE ANY OF THE INFORMATION TO OTHERS.			WEIGHT	SCALE	12" SLEWING DRIVE
			50Kg	NTS	
SYMBOL ISO	SIZE	A3	SHEET	1/1	ZE12C-78(M)-R(C)
THE TOLERANCE NOT MENTIONED IS REFERRED TO ISO 2768-L-CASTING TOLERANCE ISO 8082-CT10					REV A

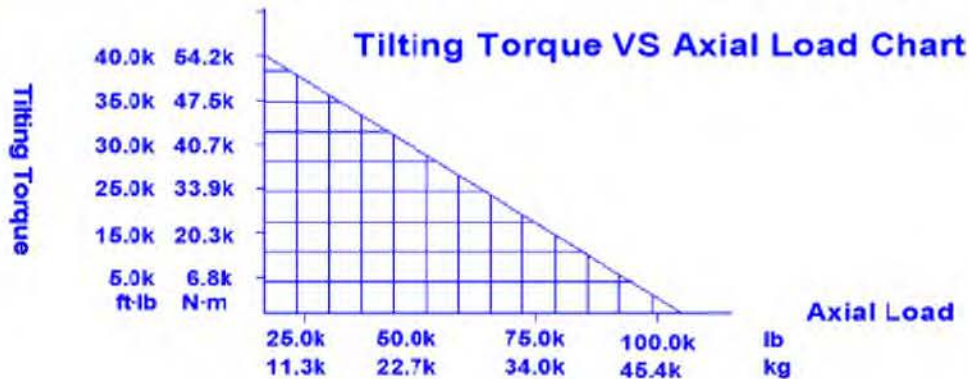
SLEWING DRIVES PERFORMANCE DATA

Model Code : ZE12C-78(M)-R(C)

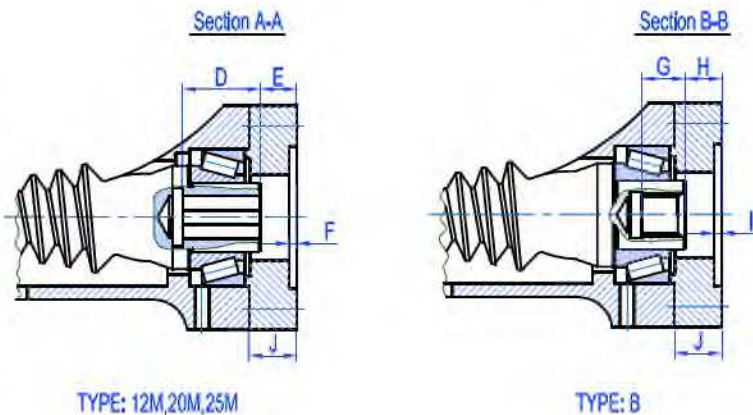
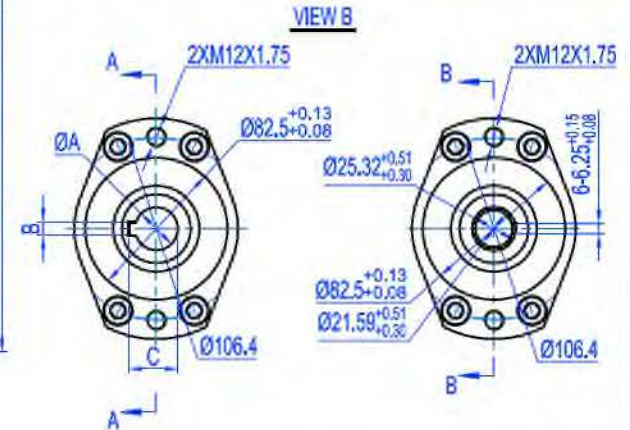
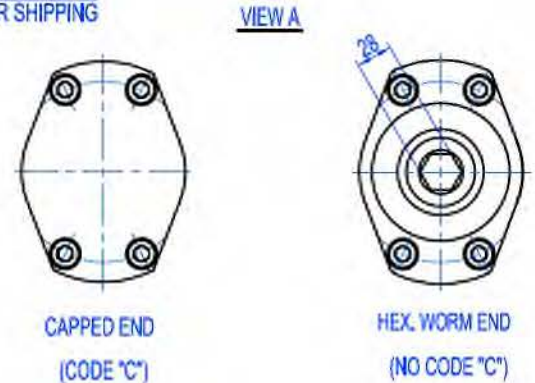
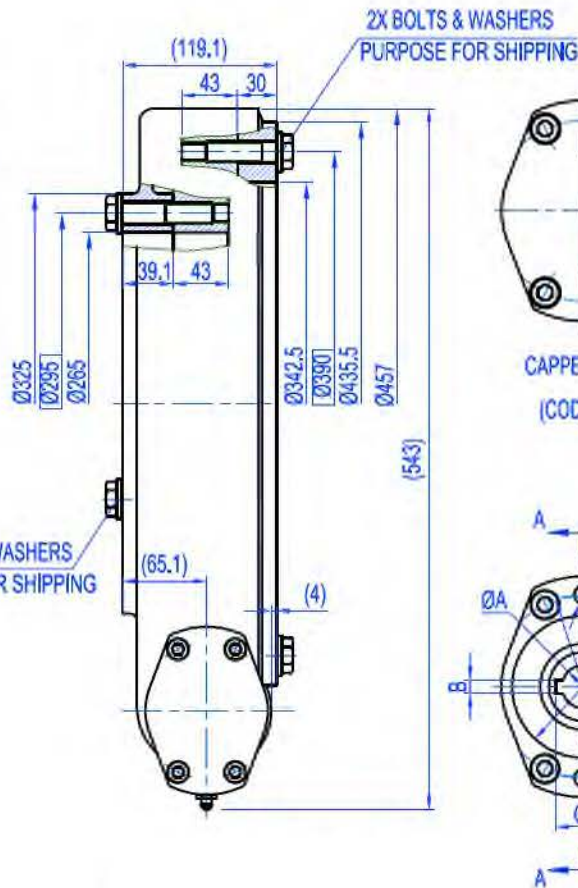
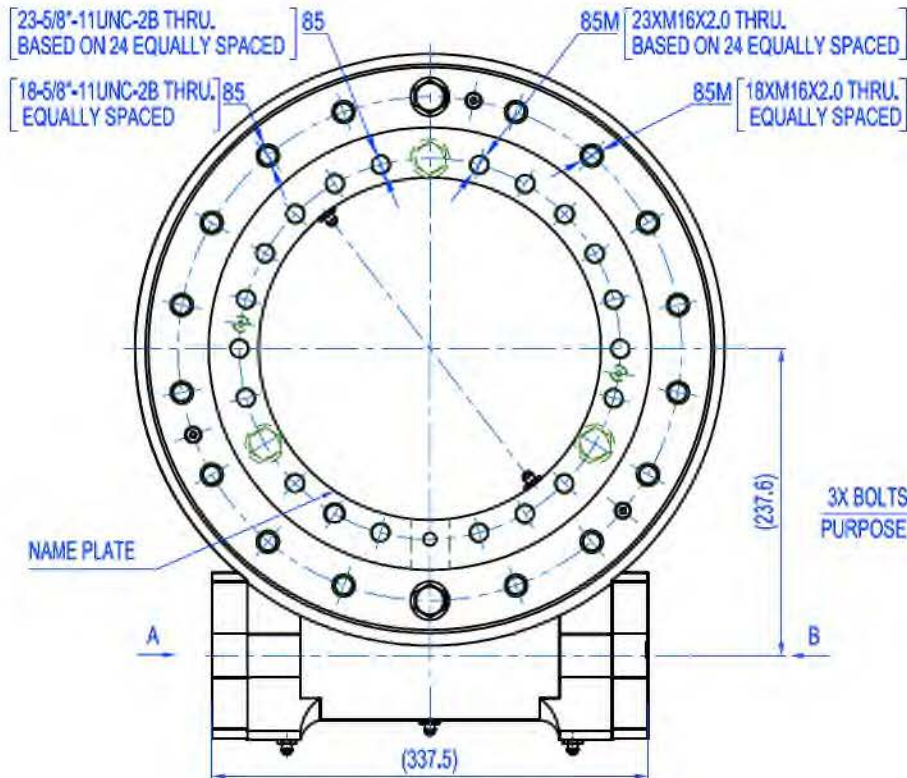
Slewing Drive Ratio	78:1
Rotating Output Rated Speed	-
Efficiency	43%
International Protection (IP)	55
Motor Temperature	-
Worm Drive Temperature	- 20°C to + 120°C
Traceability	CEDS
Torsion Stiffness	1,925Nm/mRad
Bending Stiffness	2,218Nm/mRad



Slewing Drive Loading Data	HC Type				HB Type				HQ Type				HA Type			
Normal Output Torque	1,449	N·m	1,069	ft·lb	1,739	N·m	1,283	ft·lb	2,318	N·m	1,710	ft·lb	2,898	N·m	2,138	ft·lb
Max. Output Torque(3 sec.)	2,898	N·m	2,138	ft·lb	3,478	N·m	2,565	ft·lb	4,637	N·m	3,420	ft·lb	5,796	N·m	4,275	ft·lb
Backwards Holding Torque	43,000	N·m	31,717	ft·lb	43,000	N·m	31,717	ft·lb	43,000	N·m	31,717	ft·lb	43,000	N·m	31,717	ft·lb
Overturning Moment	54,240	N·m	40,007	ft·lb	54,240	N·m	40,007	ft·lb	54,240	N·m	40,007	ft·lb	54,240	N·m	40,007	ft·lb
Static Radial Rating	190.30	KN	42,779	lb	190.30	KN	42,779	lb	190.30	KN	42,779	lb	190.30	KN	42,779	lb
Static Axial Rating	475.08	kN	106,798	lb	475.08	kN	106,798	lb	475.08	kN	106,798	lb	475.08	kN	106,798	lb
Dynamic Radial Rating	99.77	KN	22,428	lb	99.77	KN	22,428	lb	99.77	KN	22,428	lb	99.77	KN	22,428	lb
Dynamic Axial Rating	114.02	kN	25,632	lb	114.02	kN	25,632	lb	114.02	kN	25,632	lb	114.02	kN	25,632	lb



DESIGNED BY					
CHECKED BY					
APPROVED BY					
ALL PROPRIETARY RIGHTS IN THE SUBJECT MATTER HEREOF ARE RESERVED, AND NO PERMISSION IS GRANTED TO REPRODUCE THIS PRINT IN WHOLE OR IN PART, OR TO DISCLOSE ANY OF THE INFORMATION TO OTHERS.				WEIGHT	SCALE
					NTS
				SHEET	1/1
SYMBOLS ISO		SIZE A4			12" SLEWING DRIVE
					REV A



UNIT: mm

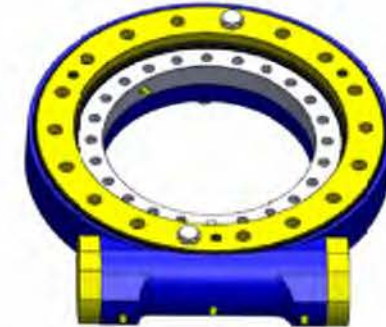
TYPE	A	B	C	D	E	F	G	H	I	J
12M	124 ^{±0.15}	4.5 ^{±0.05}	13.8 ^{±0.1}	22.5	0	4.5				27.5
20M	202 ^{±0.15}	6.25 ^{±0.05}	22.8 ^{±0.1}	30	12	4.5				27.5
25M	252 ^{±0.15}	8.0 ^{±0.05}	28.3 ^{±0.1}	42	21.2	4.5				27.5
B							25.4	25	4.5	27.5

DESIGNED BY					
CHECKED BY					
APPROVED BY					
ALL PROPRIETARY RIGHTS IN THE SUBJECT MATTER HEREOF ARE RESERVED, AND NO PERMISSION IS GRANTED TO REPRODUCE THIS PRINT IN WHOLE OR IN PART, OR TO DISCLOSE ANY OF THE INFORMATION TO OTHERS.			WEIGHT	SCALE	14" SLEWING DRIVE
			55Kg	NTS	
SYMBOL ISO	SIZE	A3	SHEET	1/1	ZE14C-85(M)-R(C)
THE TOLERANCE NOT MENTIONED IS REFERRED TO ISO 2768-ML CASTING TOLERANCE ISO 8082-CT10					

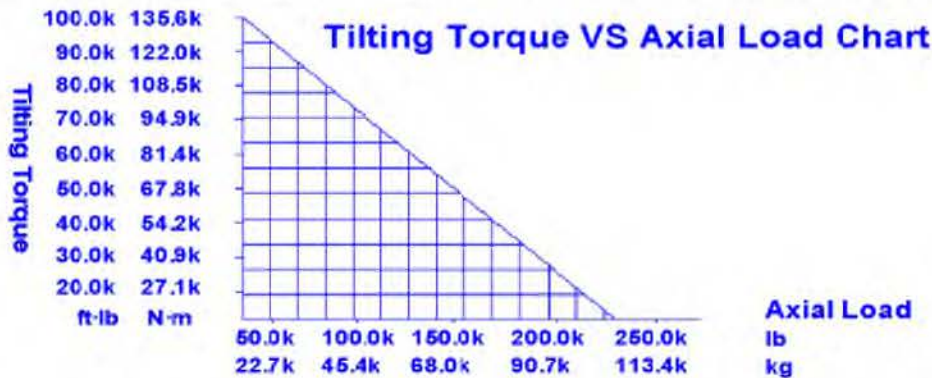
SLEWING DRIVES PERFORMANCE DATA

Model Code : ZE14C-85(M)-R(C)

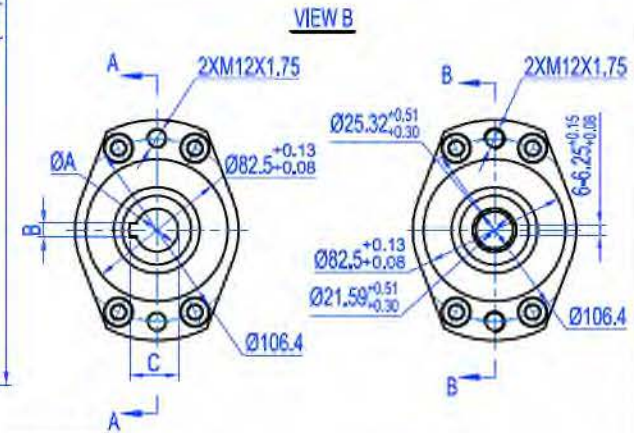
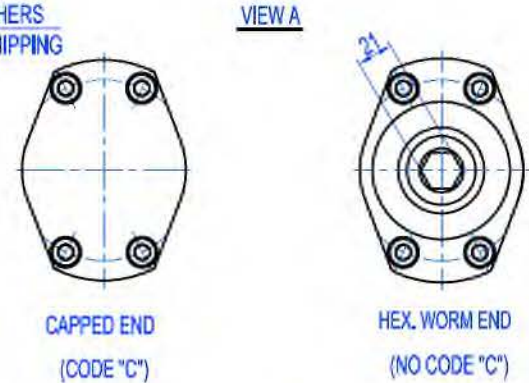
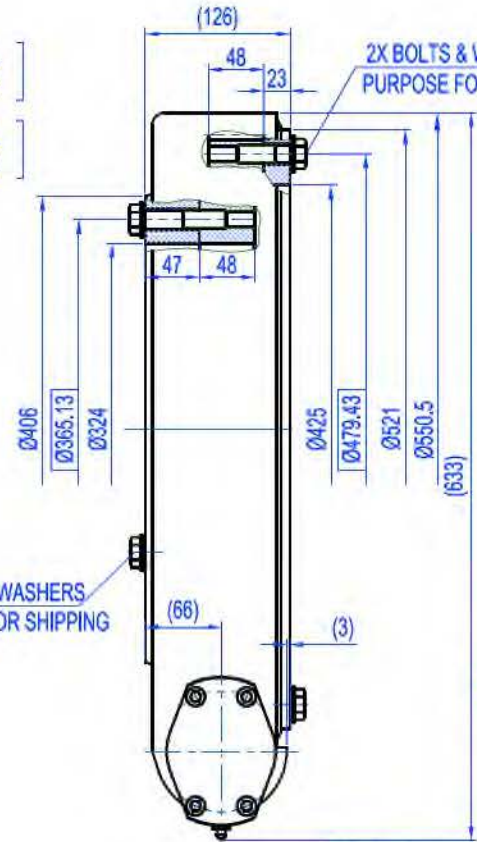
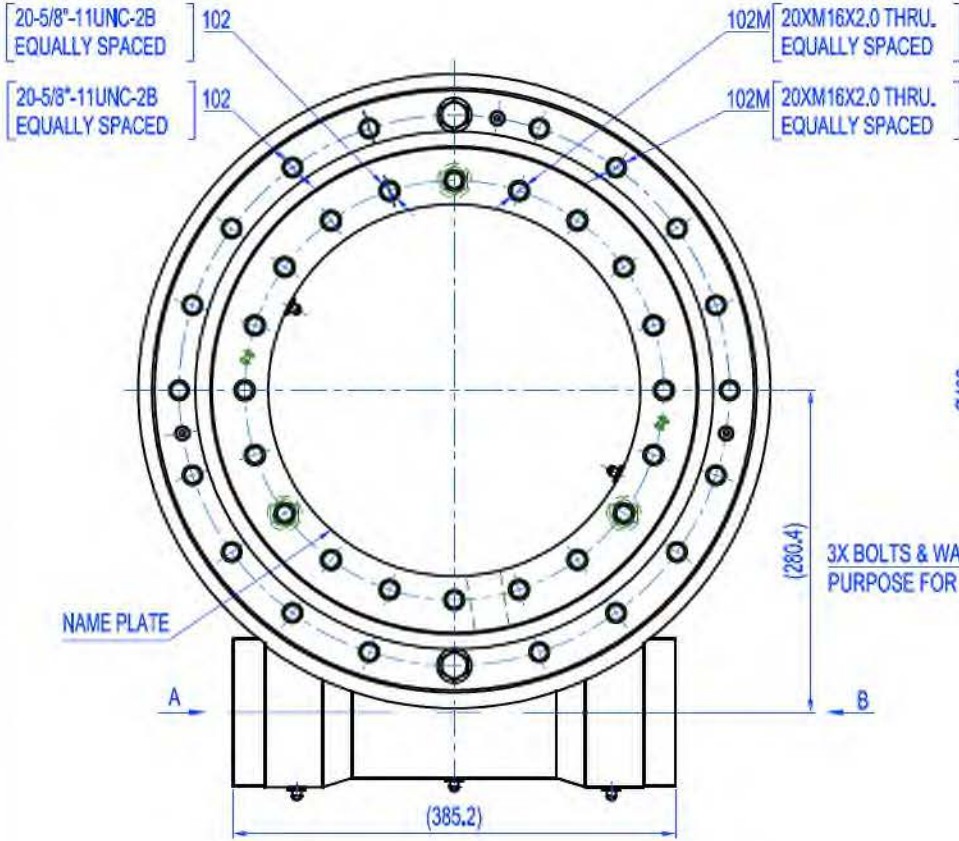
Slewing Drive Ratio	85:1
Rotating Output Rated Speed	-
Efficiency	43%
International Protection (IP)	55
Motor Temperature	-
Worm Drive Temperature	- 20°C to + 120°C
Traceability	CEDS
Torsion Stiffness	2,240Nm/mRad
Bending Stiffness	2,645Nm/mRad



Slewing Drive Loading Data	HC Type				HB Type				HQ Type				HA Type			
Normal Output Torque	1,624	N-m	1,198	ft-lb	1,949	N-m	1,438	ft-lb	2,599	N-m	1,917	ft-lb	3,249	N-m	2,396	ft-lb
Max. Output Torque(3 sec.)	3,249	N-m	2,396	ft-lb	3,898	N-m	2,875	ft-lb	5,198	N-m	3,834	ft-lb	6,497	N-m	4,792	ft-lb
Backwards Holding Torque	48,000	N-m	35,405	ft-lb	48,000	N-m	35,405	ft-lb	48,000	N-m	35,405	ft-lb	48,000	N-m	35,405	ft-lb
Overturning Moment	67,800	N-m	50,009	ft-lb	67,800	N-m	50,009	ft-lb	67,800	N-m	50,009	ft-lb	67,800	N-m	50,009	ft-lb
Static Radial Rating	222.00	KN	49,906	lb	222.00	KN	49,906	lb	222.00	KN	49,906	lb	222.00	KN	49,906	lb
Static Axial Rating	555.00	kN	124,764	lb	555.00	kN	124,764	lb	555.00	kN	124,764	lb	555.00	kN	124,764	lb
Dynamic Radial Rating	116.55	KN	26,200	lb	116.55	KN	26,200	lb	116.55	KN	26,200	lb	116.55	KN	26,200	lb
Dynamic Axial Rating	133.20	kN	29,943	lb	133.20	kN	29,943	lb	133.20	kN	29,943	lb	133.20	kN	29,943	lb

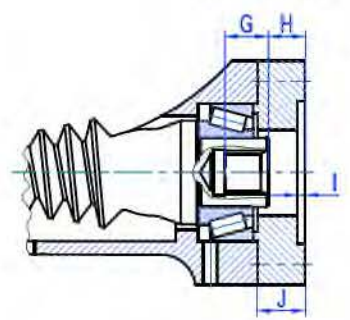
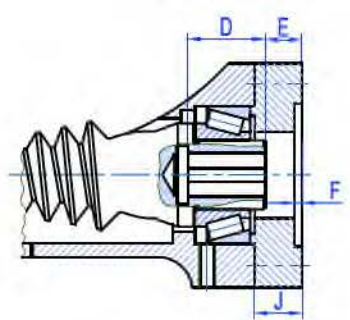


DESIGNED BY					
CHECKED BY					
APPROVED BY					
ALL PROPRIETARY RIGHTS IN THE SUBJECT MATTER HEREOF ARE RESERVED, AND NO PERMISSION IS GRANTED TO REPRODUCE THIS PRINT IN WHOLE OR IN PART, OR TO DISCLOSE ANY OF THE INFORMATION TO OTHERS.				WEIGHT	SCALE
					NTS
				SHEET	1/1
				14" SLEWING DRIVE	
				ZE14C-85(M)-R(C)	
SYMBOL ISO				SIZE A4	REV A



Section A-A

Section B-B



TYPE: 12M,20M,25M

TYPE: B

UNIT: mm

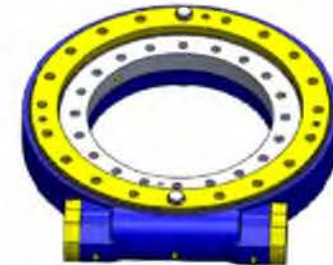
TYPE	A	B	C	D	E	F	G	H	I	J
12M	12 ^{+0.05}	4 ^{+0.08}	13.8 ^{+0.1}	23	-3	4.5				27.5
20M	20 ^{+0.05}	6 ^{+0.08}	22.8 ^{+0.1}	30	12	4.5				27.5
25M	25 ^{+0.05}	8 ^{+0.08}	28.3 ^{+0.1}	35	21.2	4.5				27.5
B							28.8	24.8	4.5	27.5

DESIGNED BY					
CHECKED BY					
APPROVED BY					
ALL PROPRIETARY RIGHTS IN THE SUBJECT MATTER HEREOF ARE RESERVED, AND NO PERMISSION IS GRANTED TO REPRODUCE THIS PRINT IN WHOLE OR IN PART, OR TO DISCLOSE ANY OF THE INFORMATION TO OTHERS.			WEIGHT	SCALE	17" SLEWING DRIVE
			96Kg	NTS	
SYMBOL ISO	SIZE	A3	SHEET	1/1	ZE17D-102(M)-R(C)
THE TOLERANCE NOT MENTIONED IS REFERRED TO ISO 2768-M-CASTING TOLERANCE ISO 8062-CT10					

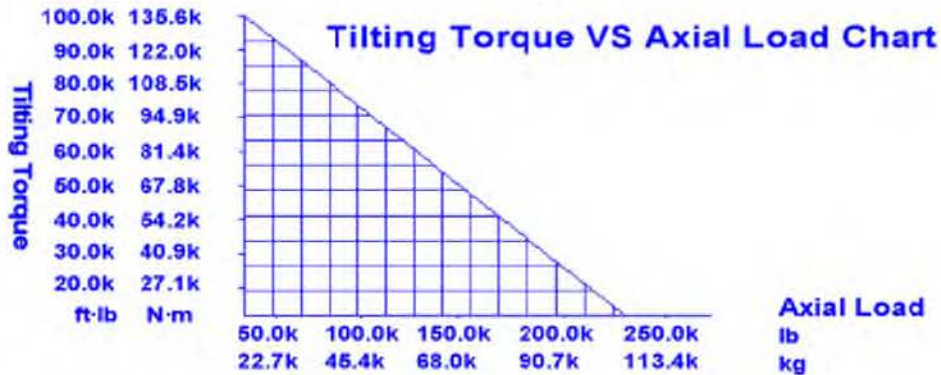
SLEWING DRIVES PERFORMANCE DATA

Model Code : ZE17D-102(M)-R(C)

Slewing Drive Ratio	102:1
Rotating Output Rated Speed	-
Efficiency	43%
International Protection (IP)	55
Motor Temperature	-
Worm Drive Temperature	- 20°C to -120°C
Traceability	CEDS
Torsion Stiffness	2,734Nm/mRad
Bending Stiffness	3,212Nm/mRad



Slewing Drive Loading Data	HC Type				HB Type				HQ Type				HA Type			
Normal Output Torque	2,340	N·m	1,726	ft·lb	2,808	N·m	2,071	ft·lb	3,744	N·m	2,762	ft·lb	4,680	N·m	3,452	ft·lb
Max. Output Torque(3 sec.)	4,680	N·m	3,452	ft·lb	5,616	N·m	4,142	ft·lb	7,488	N·m	5,523	ft·lb	9,360	N·m	6,904	ft·lb
Backwards Holding Torque	72,290	N·m	53,321	ft·lb	72,290	N·m	53,321	ft·lb	72,290	N·m	53,321	ft·lb	72,290	N·m	53,321	ft·lb
Overturning Moment	135,600	N·m	100,019	ft·lb	135,600	N·m	100,019	ft·lb	135,600	N·m	100,019	ft·lb	135,600	N·m	100,019	ft·lb
Static Radial Rating	390.72	KN	87,834	lb	390.72	KN	87,834	lb	390.72	KN	87,834	lb	390.72	KN	87,834	lb
Static Axial Rating	976.81	kN	219,587	lb	976.81	kN	219,587	lb	976.81	kN	219,587	lb	976.81	kN	219,587	lb
Dynamic Radial Rating	205.13	KN	46,113	lb	205.13	KN	46,113	lb	205.13	KN	46,113	lb	205.13	KN	46,113	lb
Dynamic Axial Rating	234.43	kN	52,700	lb	234.43	kN	52,700	lb	234.43	kN	52,700	lb	234.43	kN	52,700	lb



DESIGNED BY						
CHECKED BY						
APPROVED BY						
ALL PROPRIETARY RIGHTS IN THE SUBJECT MATTER HEREOF ARE RESERVED, AND NO PERMISSION IS GRANTED TO REPRODUCE THIS PRINT IN WHOLE OR IN PART, OR TO DISCLOSE ANY OF THE INFORMATION TO OTHERS.				WEIGHT	SCALE	17" SLEWING DRIVE
					NTS	
SYMBOL	SIZE	A4	SHEET	1/1	ZE17D-102(M)-R(C)	REV
ISO						A